

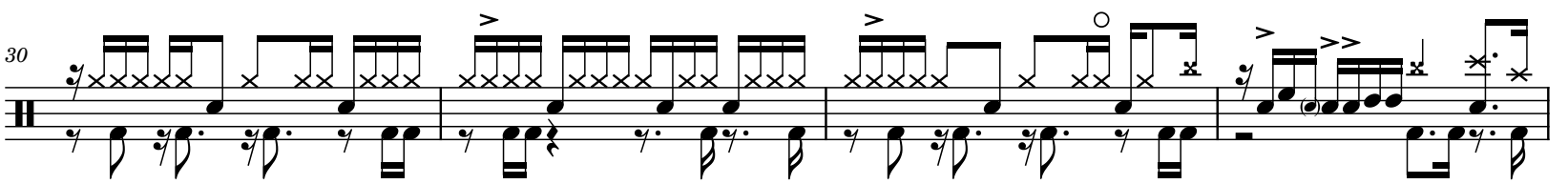
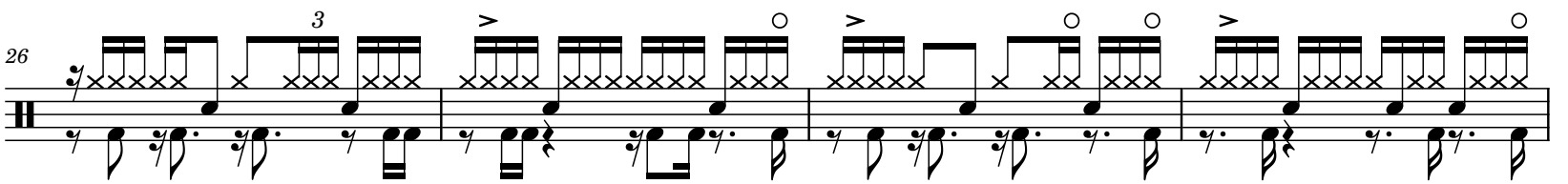
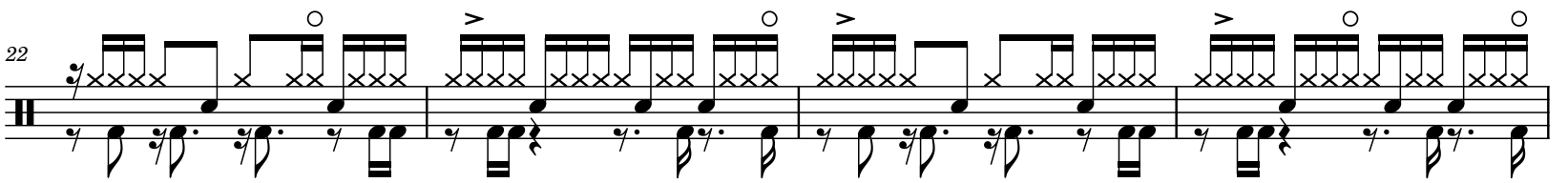
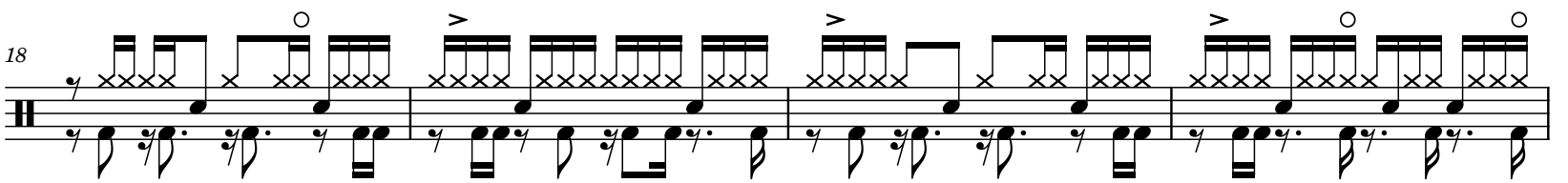
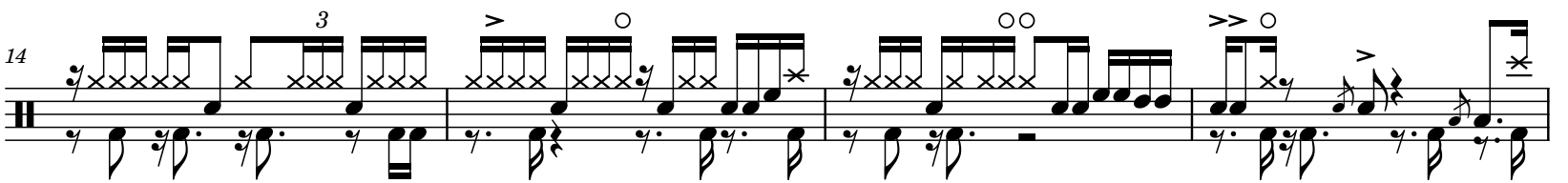
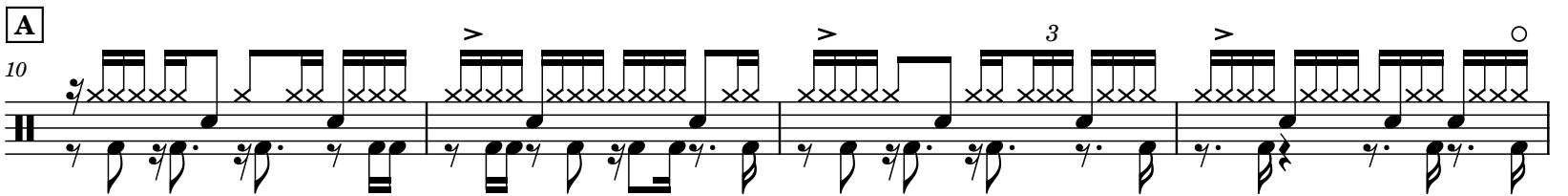
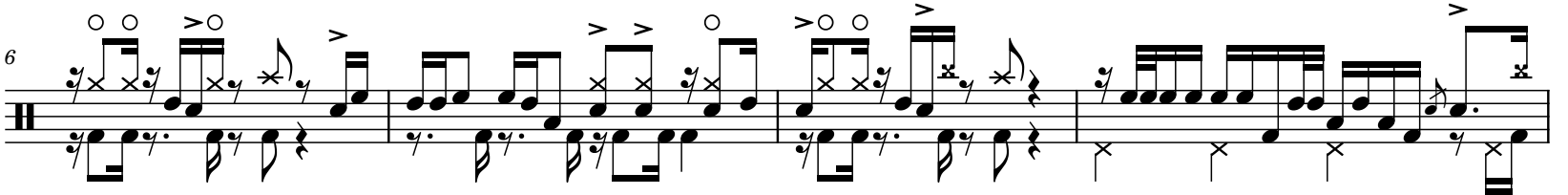
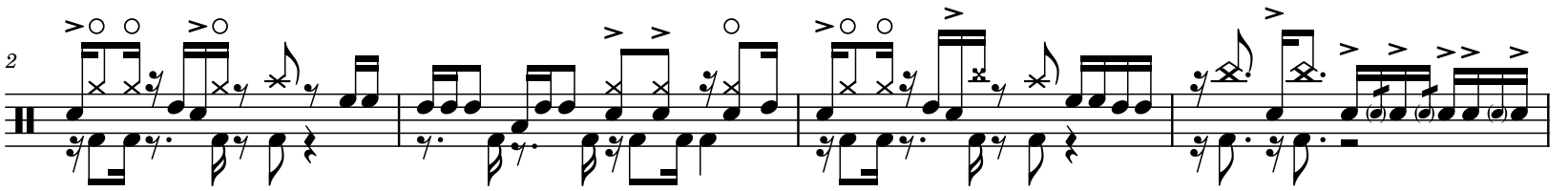
PUMA (美洲狮)

Trix

Tabbed by 墨"音

♩ = 127

Intro



B

34

38

42

46

C

50

54

58

62

66

70

D

71

75

79

83

E

87

90

93

96

99

102

105

A

108

Musical notation for section A, measures 108-111. The notation consists of two staves. The upper staff features a complex rhythmic pattern of eighth notes, often beamed in groups of four, with various accents and a fermata over the final note of the first measure. The lower staff provides a harmonic accompaniment with chords and single notes.

112

Musical notation for section A, measures 112-115. The notation continues with similar rhythmic patterns in the upper staff and accompaniment in the lower staff. A fermata is present over the final note of the first measure.

B

116

Musical notation for section B, measures 116-119. The notation continues with similar rhythmic patterns in the upper staff and accompaniment in the lower staff. A fermata is present over the final note of the first measure.

120

Musical notation for section B, measures 120-123. The notation continues with similar rhythmic patterns in the upper staff and accompaniment in the lower staff. A fermata is present over the final note of the first measure.

124

Musical notation for section B, measures 124-127. The notation continues with similar rhythmic patterns in the upper staff and accompaniment in the lower staff. A fermata is present over the final note of the first measure.

128

Musical notation for section B, measures 128-131. The notation continues with similar rhythmic patterns in the upper staff and accompaniment in the lower staff. A fermata is present over the final note of the first measure.

B

132

Musical notation for section B, measures 132-135. The notation continues with similar rhythmic patterns in the upper staff and accompaniment in the lower staff. A fermata is present over the final note of the first measure.

136

Musical notation for section B, measures 136-139. The notation continues with similar rhythmic patterns in the upper staff and accompaniment in the lower staff. A fermata is present over the final note of the first measure.

140

144

C
148

152

156

160

164

167