

25

27

RLRL
RLRK

29

LKRL
RLLK
RLLK

31

RLLK
RRL
LKRL
LRRL
RLLK
RKRK
RLRL

33

35

37

39

RLLK
KRLK
RLLK
RKRK
RLRL

41

RL
RLRK

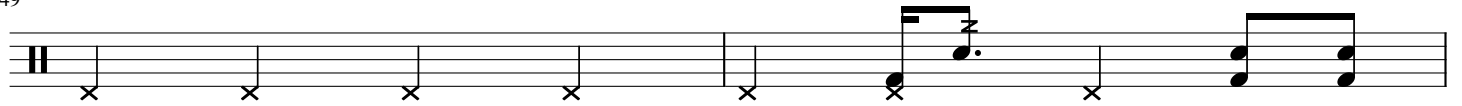
45

效果擦
L
效果擦
LKRL
LKRL
RLLK
RLLK
叠擦

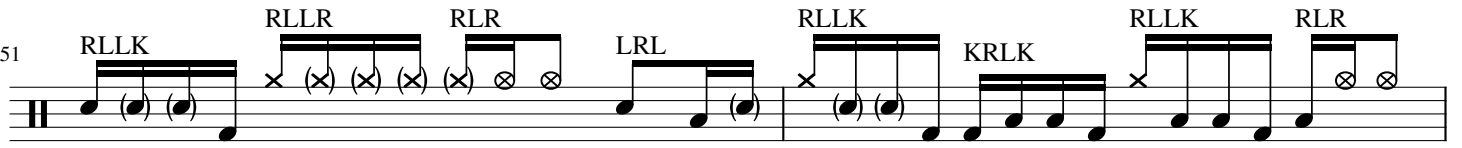
47

RKRK
RLLR
RLRL
LKRR
LKRL
LKRL
RLRL

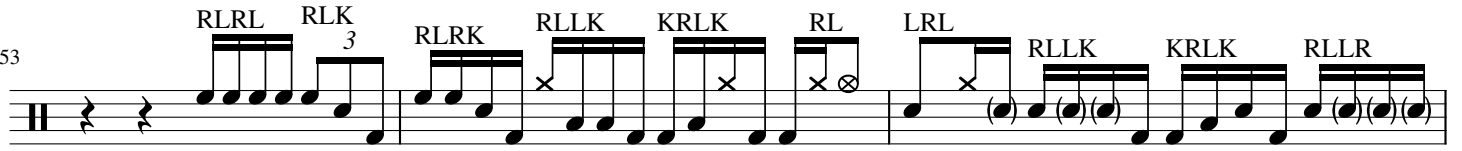
49



51



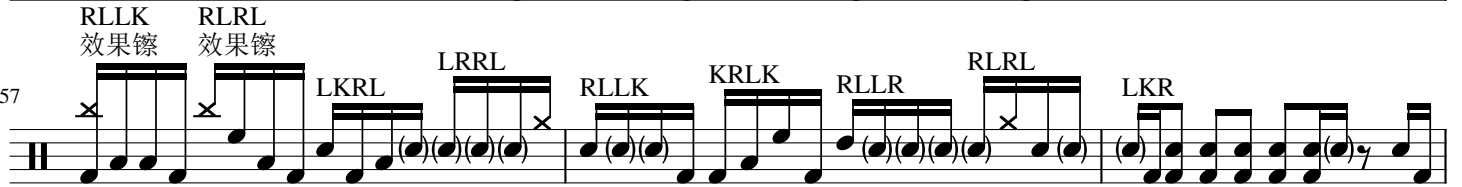
53



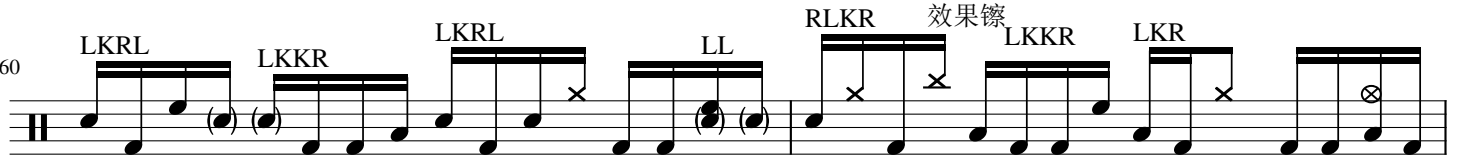
56



57



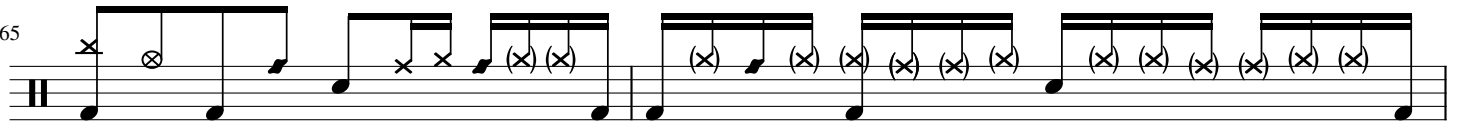
60



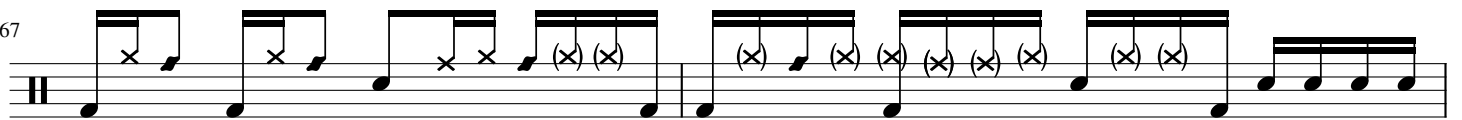
62



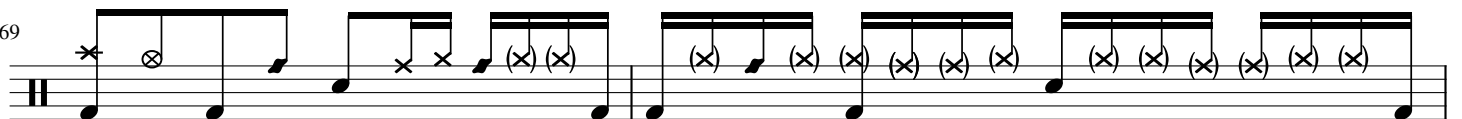
65



67



69



71



73 RL RLRK

77 效果擦 RL L 效果擦 RLLK 叠擦 KRLK RLLK RLLK

79 RKRK RLLR RLRL LKKR LKRL LKRL RLRL

81

83 LKRL LKRL RLKR LKRL LKRL RLRL RLLK 效果擦 RLRL 效果擦 RLLK 效果擦

86 RLLK RLRL RLRL R RL LKKR LKRL LKRL RL

88 RKRL LKRL RKRK RLRL RLLK 效果擦 LLR 效果擦 叠擦 LLRL RL RLRL

91 效果擦 RL RL 效果擦 RL RL RK

93 效果擦 RL 效果擦 LKRL LKRL RLLK 叠擦 KRLK RLLK RLLK

95 RKRK RLLR RLRL LKKR LKRL LKRL RLRL

97 3

101

103

105

107

KRLK RLLR RLRL LKKR LKRL LKRL RLRL

109

111

113

115

RL LKKR LKRL LKRK LKRL

117

119

121

123 KRLK RLLR RLRL LKKR LKRL LKRL LKRL RLRL

Musical notation for line 123, featuring a sequence of rhythmic patterns: KRLK, RLLR, RLRL, LKKR, LKRL, LKRL, LKRL, and RLRL. The notation includes various note values and rests on a five-line staff.

125 RLLK 效果擦 RLRL 效果擦 RLLK 效果擦 RLLK

Musical notation for line 125, featuring a sequence of rhythmic patterns: RLLK (效果擦), RLRL (效果擦), RLLK (效果擦), and RLLK. The notation includes various note values and rests on a five-line staff.

129 RLRL RLLK RLRL RLRL

Musical notation for line 129, featuring a sequence of rhythmic patterns: RLRL, RLLK, RLRL, and RLRL. The notation includes various note values and rests on a five-line staff.

133 LKKR LKRL LKRL RLRL RLLK KRLK RLLK

Musical notation for line 133, featuring a sequence of rhythmic patterns: LKKR, LKRL, LKRL, RLRL, RLLK, KRLK, and RLLK. The notation includes various note values and rests on a five-line staff.

136 RKKR RLLK RLLK RLRL RLLK RLLK LKRL

Musical notation for line 136, featuring a sequence of rhythmic patterns: RKKR, RLLK, RLLK, RLRL, RLLK, RLLK, and LKRL. The notation includes various note values and rests on a five-line staff.

138 RLLK 效果擦 RLRL 效果擦 RLLK 效果擦 RLLK RLLR RLRL

Musical notation for line 138, featuring a sequence of rhythmic patterns: RLLK (效果擦), RLRL (效果擦), RLLK (效果擦), RLLK, RLLR, and RLRL. The notation includes various note values and rests on a five-line staff.

141 RL LKKR LKRL LKRL RL RKR LKRL RLRL RLLK LLRL LKRL

Musical notation for line 141, featuring a sequence of rhythmic patterns: RL, LKKR, LKRL, LKRL, RL, RKR, LKRL, RLRL, RLLK, LLRL, and LKRL. The notation includes various note values and rests on a five-line staff.

144 LKRL 效果擦 LKRL RLLK RLLK RLLK RLLK

Musical notation for line 144, featuring a sequence of rhythmic patterns: LKRL (效果擦), LKRL, RLLK, RLLK, RLLK, and RLLK. The notation includes various note values and rests on a five-line staff.

146 效果擦 效果擦 RLRL LKRL RLLK 效果擦 RLLK 效果擦 LKRL RL RLRL

Musical notation for line 146, featuring a sequence of rhythmic patterns: 效果擦, 效果擦, RLRL, LKRL, RLLK (效果擦), RLLK (效果擦), LKRL, RL, and RLRL. The notation includes various note values and rests on a five-line staff.

149 RL LKKR LKRL LRRL RL LKKR LKRL RLRL

Musical notation for line 149, featuring a sequence of rhythmic patterns: RL, LKKR, LKRL, LRRL, RL, LKKR, LKRL, and RLRL. The notation includes various note values and rests on a five-line staff.

153 RL LRLR LKKR RKRL

Musical notation for line 153, featuring a sequence of rhythmic patterns: RL, LRLR, LKKR, and RKRL. The notation includes various note values and rests on a five-line staff.

155 LRRL RLLR RLRK KRLK RLLK RL LKRL

157

159

161

163 RLLK RLLR RKKR LKRL LRRL RLLK RKKR RLRL

165

167

169 LKRL RLRL

171 RLLK RLRL LKKR LKRL LKRK RKRK RLRL RLLK 效果擦 LLR LKRL RL

174 效果擦 RLRL 叠擦 RLRL RL RL 效果擦 RL RK

177 RL 效果擦 LKRL 效果擦 RLLK 叠擦 KRLK RLLK RKRK RLLK RLRL

180

A musical staff with a treble clef and a key signature of one flat (B-flat). The staff contains a sequence of notes and rests. Above the staff, there are four groups of notes, each enclosed in a thick black box. The first group consists of four quarter notes. The second group consists of four quarter notes, with the first two notes circled. The third group consists of four quarter notes. The fourth group consists of four quarter notes. Above the first and fourth groups, there are asterisks. Above the second and third groups, there are the labels "RLLK" and "RLRL" respectively. The staff ends with a double bar line.